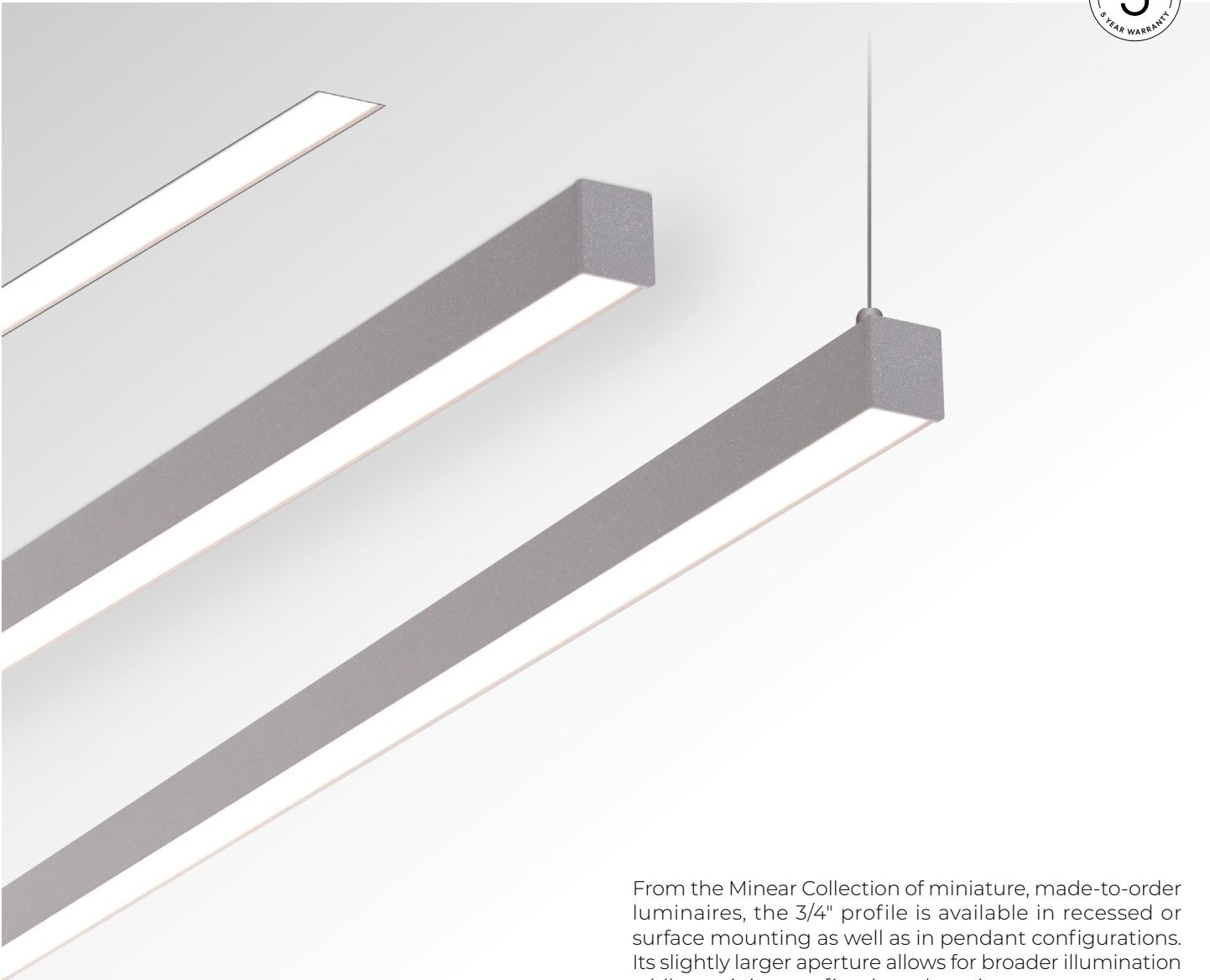


MINEAR 3/4"

DIRECT
PENDANT, RECESSED, SURFACE



From the Minear Collection of miniature, made-to-order luminaires, the 3/4" profile is available in recessed or surface mounting as well as in pendant configurations. Its slightly larger aperture allows for broader illumination while retaining a refined, unobtrusive presence.

SENSORS
For latest information on sensors, click [here](#).

Minear Brochure



IC RATED



MINEAR 3/4"



DIRECT
PENDANT, RECESSED, SURFACE

Project: _____
Type: _____

Order Guide

LUMINAIRE ID	DISTRIBUTION	OPTIC	LIGHT SOURCE	CRI	LUMEN PACKAGE
	D	BLO	SW		
MIN07P - Minear 3/4" Pendant MIN07R - Minear 3/4" Recessed MIN07S - Minear 3/4" Surface	D - Direct	BLO - Balanced Lambertian Optic	SW - Static white	80CRI - 80+ CRI 90CRI - 90+ CRI	150LMF ¹ - Hypo output 150 lm/ft 200LMF ¹ - Low output 200 lm/ft 350LMF - Medium output 350 lm/ft 500LMF ² - High output 500 lm/ft 600LMF ² - Ultra high output 600 lm/ft ¹ Minimum fixture length is 3'. ² Not IC-rated for Recessed.

COLOR TEMPERATURE	LUMINAIRE LENGTH	VOLTAGE	DRIVER ⁵	ELECTRICAL
				IC
27K - 2700K 30K - 3000K 35K - 3500K 40K - 4000K 50K - 5000K	#FT#IN ³ - Specify nominal length (#) in 1' and/or 4" increments Standard nominal lengths: Single units: 1' to 8' Continuous runs: lengths over 8' ³ Continuous line of light up to 16'. A joiner bridge is visible every 16'.	120V - 120V 277V - 277V UNV - 120V-277V 347V ⁴ - 347V ⁴ Available with RD1 driver only.	REMOTE RD1 - 1% 0-10V RELV ⁶ - ELV 120V RTRI ⁶ - TRIAC 120V RDA ^{7,8} - DALI RLDE1 ^{7,8} - Lutron Hi-lume 1% Eco RELD1 ⁹ - eldoLED 1% ECOdrive 0-10V RELD0 ⁸ - eldoLED 0.1% SOLOdrive 0-10V ⁵ Remote driver box is provided. ⁶ Available with 120V only. ⁷ Minimum fixture length is 3'. Consult factory for details. ⁸ On-site commissioning is required.	IC - 1 circuit

MOUNTING⁹

PENDANT ¹⁰				RECESSED	SURFACE
CANOPY TYPE	CANOPY FINISH	POWER	CABLE LENGTH	DMF ¹⁴ - Drywall mud flange	UCC - Universal ceiling clip
2CN ¹¹ - Ø 2" canopy 5CN ¹² - Ø 5" canopy	FTMW - Matte white FTMB - Matte black AL - Aluminum CF# - Custom finish, specify RAL#	CPS - Coaxial powered suspension	36IN - 36" 72IN - 72" ##IN ¹³ - Specify nominal length in inches		

⁹The mounting option selected must reflect the luminaire ID.
¹⁰See page 4 for details.
¹¹Mounted to low voltage (LV) j-boxes provided by Lumenwerx. Ø 2" for all canopies.
¹²Mounted to standard j-boxes by others. Ø 5" for power canopies, Ø 2" for non-power canopies.
¹³Maximum length is 72".
¹⁴Fixture is installed with surface clips.

FEED LOCATION ¹⁵ Specify NA for Pendant	WIRE HARNESS LENGTH ¹⁶ Specify NA for Pendant	FINISH ¹⁷
TF - Top feed NA - Not applicable ¹⁵ 6" quick connector feed.	10FT - 10' 20FT - 20' 30FT - 30' 50FT - 50' 70FT - 70' 90FT - 90' NA - Not applicable ¹⁶ Low-voltage, plenum-rated wire harness for remote driver.	FTMW - Matte white FTMB - Matte black AL - Aluminum CF# - Custom finish, specify RAL# ¹⁷ See page 6 for more finish options.



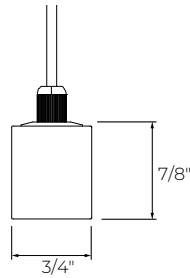
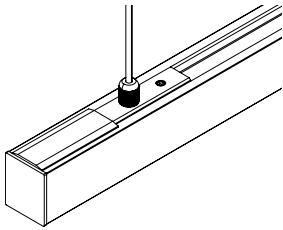
MINEAR 3/4"

DIRECT
PENDANT, RECESSED, SURFACE



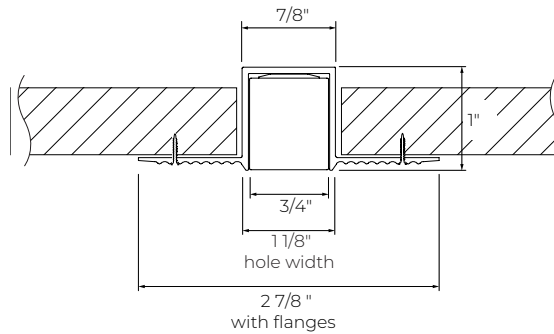
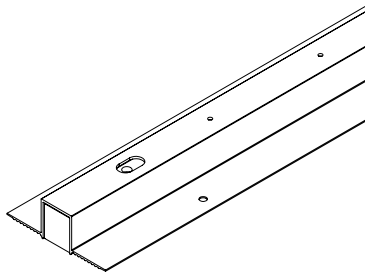
Dimensions

Pendant



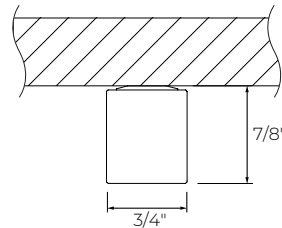
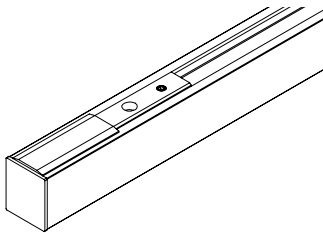
CPS - Coaxial powered suspension

Recessed



DMF - Drywall mud flange

Surface



UCC - Universal ceiling clip

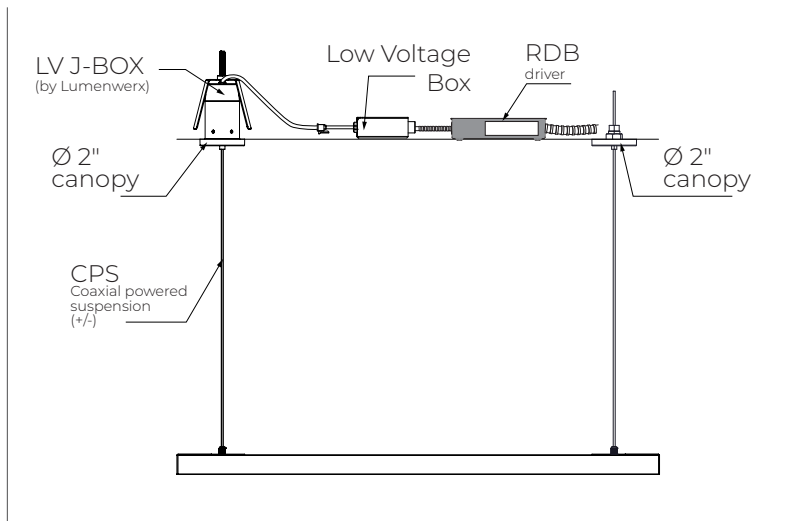
MINEAR 3/4"

DIRECT
PENDANT, RECESSED, SURFACE

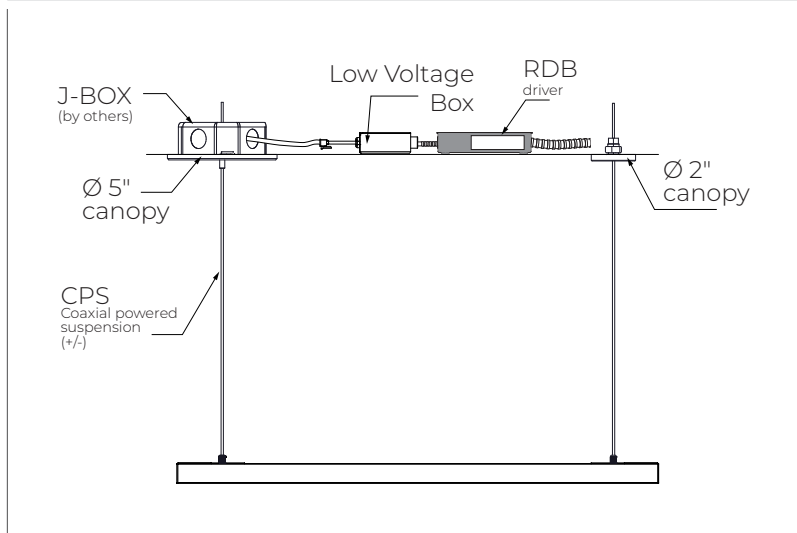


Pendant Mounting Details

2CN - Ø 2" canopy



5CN - Ø 5" canopy



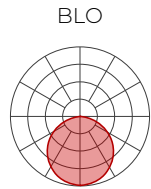
MINEAR 3/4"

DIRECT
PENDANT, RECESSED, SURFACE



Photometrics

Values calculated based on a 4' fixture at 3500K.



LM/FT	W/FT	LM/W
150	1.8	82
200	2.4	83
350	4.1	85
500	6.0	83
600	7.3	83

MULTIPLIER TABLE

Use this table to get results for different color temperatures.

CCT	WATTS	LPW
	80+ CRI / 90+ CRI	80+ CRI / 90+ CRI
2700K	1.05	0.95
3000K	1.02	0.98
3500K	1.00	1.00
4000K	1.00	1.00
5000K	0.96	1.04

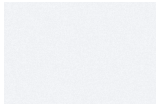
MINEAR 3/4"



DIRECT
PENDANT, RECESSED, SURFACE

Fixture Finishes

Standard



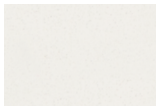
FTMW - Matte White



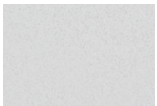
FTMB - Matte Black

Custom

Neutrals



CRM - Cream



GRY - Gray



STG - Steel Gray

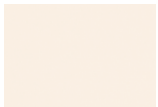


SAG - Sage Gray



BLB - Black Blue

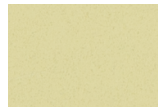
Designer



ALM - Almond



RST - Rust Fine
Texture



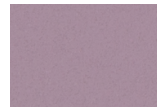
GRB - Green Beige



YLW - Yellow



SLM - Salmon Pink



VIO - Pastel Violet



RED - Red



PRR - Purple Red



SMB - Storm Blue



DPB - Deep Blue



OCB - Ocean Blue



BLG - Blue Green

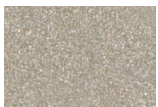


GNS - Green Smoke

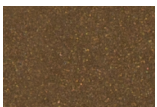


MNG - Mint Green

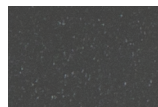
Metallics



CHP - Champagne



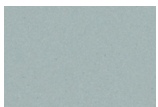
DBZ - Dark Bronze



CNY - Canyon

Premium Custom

Neutrals



MOG - Moss Gray



QRZ - Quartzite
Texture



LMG - Lime Green



GLD - Gold



IRN - Iron Ore



SBP - Sandblast
Copper



SWD - Sandalwood

MINEAR 3/4"

DIRECT

PENDANT, RECESSED, SURFACE



Technical Specifications

OPTICS

Balanced Lambertian Optic (BLO)

The Balanced Lambertian Optic (BLO), made from high-quality satin-diffuse acrylic, uses a micro-textured surface to produce soft, uniform distribution with a glare-controlled falloff and a wide 110° beam, ensuring consistent illumination and visual comfort.

LIGHT SOURCE

Custom array of mid-flux LEDs are cartridge-mounted with quick-connect wiring to facilitate service and thermal management. Available in 2700K, 3000K, 3500K, 4000K, and 5000K with a minimum 80+ CRI and an option for 90+ CRI with elevated R9 value. Color consistency maintained to within 3 SDCM. All LEDs have been tested in accordance with IESNA LM-80-08 and the results have shown L80 lumen maintenance greater than 60,000 hours. Absolute product photometry is measured and presented in accordance with IESNA LM-79, unless otherwise indicated.

LUMINAIRE LENGTH

Minear is available in standard lengths of 1' to 8'. Continuous runs are available for run lengths over 8', with a joiner bridge visible every 16'. Exact run length must be noted in the product code. The minimum length is 1', and can be ordered in 1' and/or 4" increments.

ELECTRICAL

Factory-set, adjustable output current LED driver with universal (120-277 VAC) input. Dimmable from 100% to 1% with 0-10V dimming control. Rated life (90% survivorship) of 50,000 hours at 50°C max. ambient (and 70°C max. case) temperature. At maximum driver load: Efficiency > 84%, PF > 0.9, THD < 20%. Other specifiable options include Lutron Hi-Lume 1% Eco, eldoLED 1% ECOdrive 0-10V, eldoLED 0.1% SOLOdrive 0-10V, ELV, TRIAC, and DALI protocol drivers. All of our standard 0-10V drivers are NEMA 410 compliant. ELV and TRIAC dimming performance (including minimum dimming percentage) subject to dimmer selection.

PoE

Depending on the PoE manufacturer selected, Lumenwerx will install the node in factory as either integral to the luminaire or as a remote module. These must be addressed and evaluated on a case-by-case basis.

MOUNTING

Pendant: Pendant fixtures are mounted with coaxial powered suspension cables.

Recessed: Recessed fixtures can be mounted in drywall ceilings with a mud flange option. The fixture is secured with a clip.

Surface: Surface fixtures can be mounted directly to drywall and hard surface ceilings with a clip. Long runs require a minimum distance of 2" from the vertical wall.

FINISH

Matte white, matte black or aluminum powder coating. Custom finishes are also available.

CONSTRUCTION

Housing: Extruded aluminum

Lens: Acrylic

Mounting clip: Polycarbonate

End caps: Aluminum

Coaxial powered suspension cable: Stainless steel aircraft cable 1mm thick

WEIGHT

Pendant: 0.25 lb/ft - 115 g/ft

Recessed: 0.30 lb/ft - 137.5 g/ft

Surface: 0.25 lb/ft - 115 g/ft

CERTIFICATION

ETL: Rated for indoor dry/damp locations. Conforms to UL Standard 1598 and certified to CAN/CSA Standard C22.2 No. 250.0.

IC rated: Suitable for direct contact with insulation. For Recessed mounting only (150 lm/ft, 200 lm/ft, and 350 lm/ft only).

WARRANTY

Lumenwerx provides a five-year limited warranty on electrical and mechanical performance of the luminaires, including the LED boards, drivers, and auxiliary electronics. Lumenwerx will repair or replace defective luminaires or components at our discretion, provided they have been installed and operated in accordance with our specifications. Other limitations apply, please refer to the full warranty on our website.